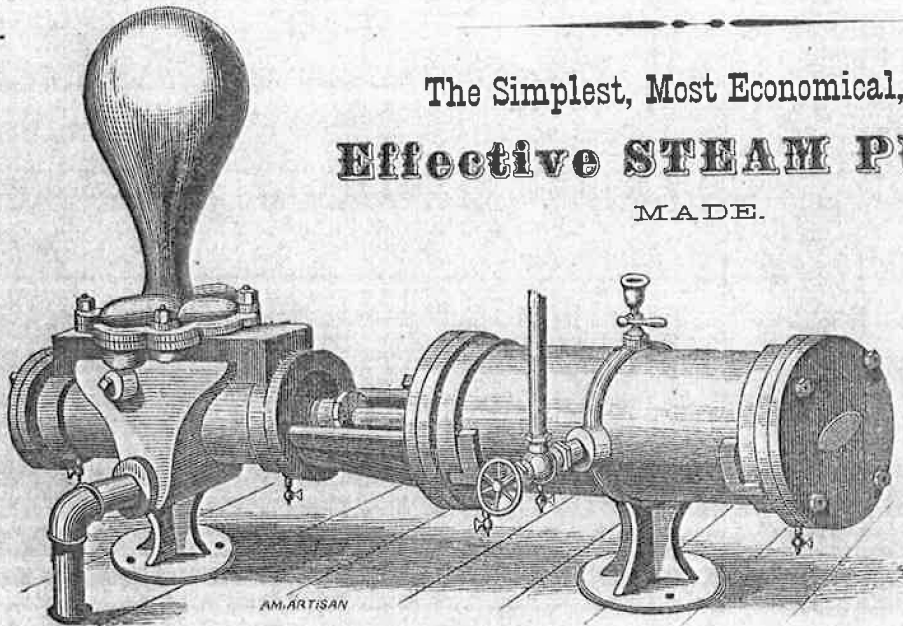


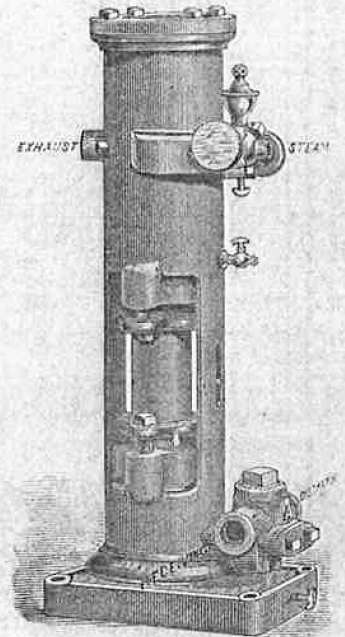
COPE & MAXWELL'S Patent STEAM PUMPS AND BOILER FEEDERS,

A Steam Engine and Pump Combined in One Machine.

The Simplest, Most Economical, and
Effective STEAM PUMPS
MADE.



Horizontal Steam Pump.



Upright Boiler Feeder.

The peculiar feature of these Machines, is their extreme simplicity; the entire Engine having but two moving parts. The complications of cranks, levers, fly-wheels, cams and noisy tappets, are entirely dispensed with. The steam chest and slide valve are inside the steam piston; the steam chest is a cylindrical chamber bored true, and the valve a piston working in it. The movement of the valve is produced by the direct action of the steam on it, the steam being admitted through grooves in the steam piston, and at each end of the steam cylinder.

It has no dead points, is always ready to start, is noiseless, and has fewer points requiring packing than any other machine made.

THE STEAM PUMP

Is now considered indispensable in the outfit of Steamboats, Railroads, Iron Furnaces, Rolling Mills, Breweries, Distilleries, Hotels and Public buildings of every kind. Besides conveying water or other liquids for the ordinary uses of an establishment, it is invaluable as a Fire Engine—being the best protection against fire that can be provided,—it occupies but little space, and is ready for service at any moment, is made to work either hot water or cold, and with the plunger pump, muddy or gritty water can be worked without injury.

THE BOILER FEEDER

Being independent in its operation, possesses two great advantages over all other machines for the purpose. 1st.—It secures a sure and uniform supply of water to the boilers, regardless of accident or derangement that may occur to the Engine, or other machinery of an establishment. 2d.—It does away with the necessity of running the engine and other machinery whether desired or not, simply to pump water into the boiler. And when steam is used, as is very frequently the case in processes where no machinery is required, the Independent Boiler Feeder becomes indispensable.

COPE & CO.

SOLE MANUFACTURERS,

118, 120 & 122 East Second St., Cincinnati.