

Photograph of our exhibit when set up
in factory

The sphere is formed by connecting
the bottoms of two of our Standard
100,000 Gallon Tanks.

Note the accuracy of fit. The holes are
laid out from templates, **not scribed.**

The plates have been formed into shape
without heating.



Write for Catalogue

Some Reasons

Why our water towers, consisting of a
hemispherical bottom tank, placed on a
steel tower, have distanced competition:

Perfect Design
Accurate Workmanship
Prompt Delivery
Low Cost : Long Life
Absolutely Water Tight



Remember

The average wood tank will last only
twelve years. Almost always fails, with-
out warning, thereby causing serious
damage. Is practically never water tight.

Write for Catalogue

Louisiana Purchase Exposition
St. Louis, 1904

Chicago Bridge & Iron Works

106th Street & Vincennes Road
Washington Heights Station
CHICAGO, ILL.

Metal Structures

Water Towers
Stand Pipes
Tanks :: Girders
Bascule Bridges
Turntables

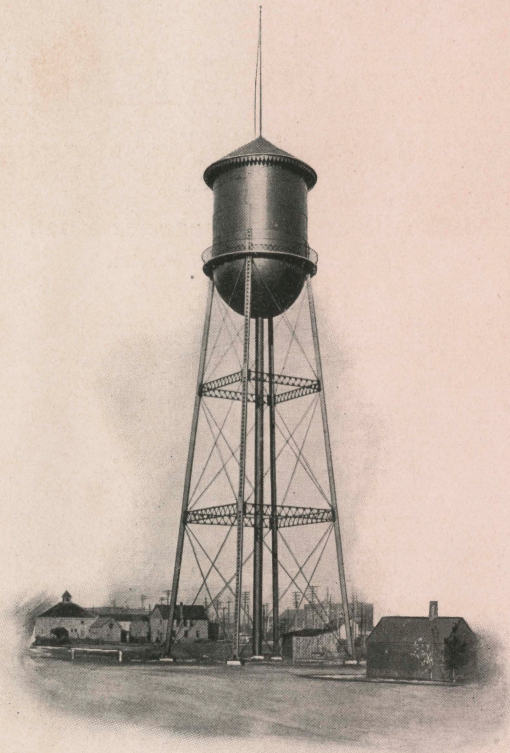


Steel Structures of All Kinds

See our Turntable under
Big Four Locomotive in
Center of Transportation Building

They Do Not Leak

CHICAGO BRIDGE & IRON WORKS



Standard Water Tower

for General Service

Cities, Villages, Hospitals, Colleges, Forts,
Cemeteries, Nuseries, etc.

Write for Catalogue

They Do Not Leak

CHICAGO BRIDGE & IRON WORKS



Standard Water Tower

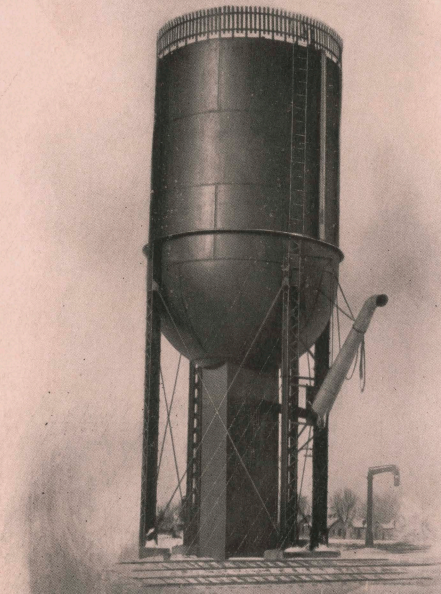
for Factory Fire Protection

With auxiliary tank furnishing supply for
domestic use

Write for Catalogue

They Do Not Leak

CHICAGO BRIDGE & IRON WORKS



Standard Water Tower

for Locomotive Service

Mud and sediment can be removed without
interrupting use

Write for Catalogue